

A close-up photograph of a mechanic wearing a blue zip-up uniform, working on a car engine. The mechanic's hands are visible, adjusting components on the engine block. The engine is a multi-cylinder unit with several circular openings. In the background, a car wheel is visible, slightly out of focus. The overall scene is set in a workshop or garage.

SHREE DHAN LAXMI ENGINEERING

COMPLETE SOLUTION FOR YOUR NEEDS

WWW.SHREEDHANLAXMIENGG.COM



ABOUT US

2004-2026

Shree Dhanlaxmi Engineering is an Engineering company involved in Manufacturing of Design Development , Manufacture & Supply of process , heat transfer equipment, various types of tool room jobs and engineering works



WWW.SHREEDHANLAXMIENGG.COM

Our Origin Story

Founded in 2004

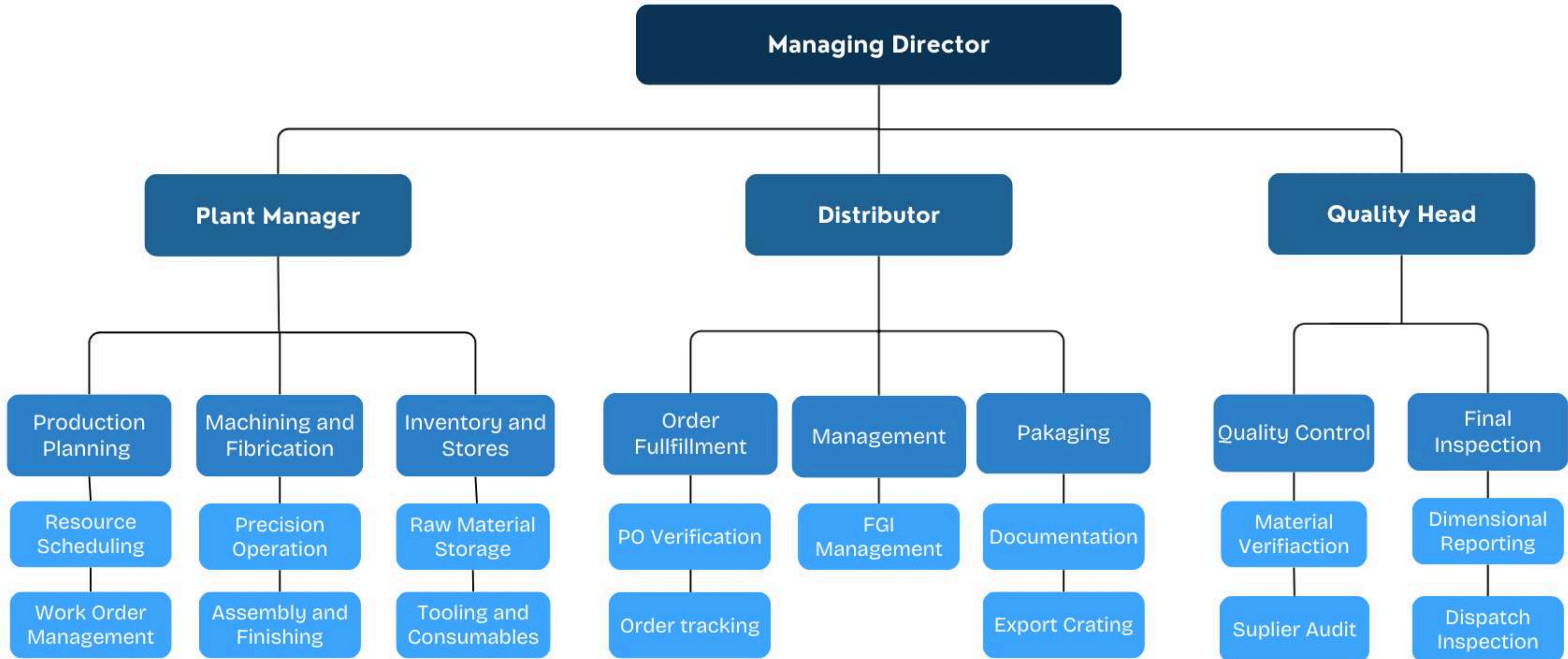


BORN FROM A VISION TO CREATE SMART, SCALABLE
SOLUTIONS FOR YOUR NEEDS

Ajabrao Deshmukh

MD of SDE Company

Our Working Model :



Products We Provide :



ALU SLOT PLATE



COPPER CONNECTION PLATE



C RAIL ASSY



ADJUSTMENT BRACKET



ALU FIT PLATE



MS BUSH

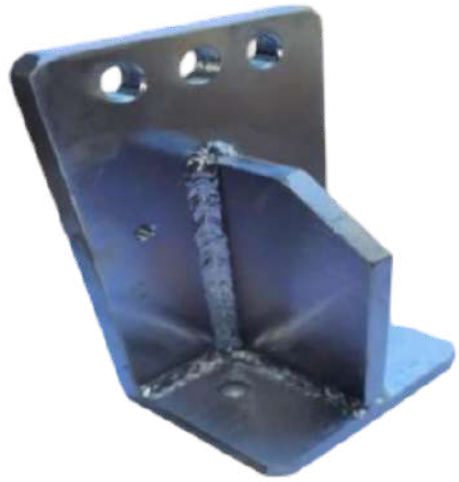


PULLEY

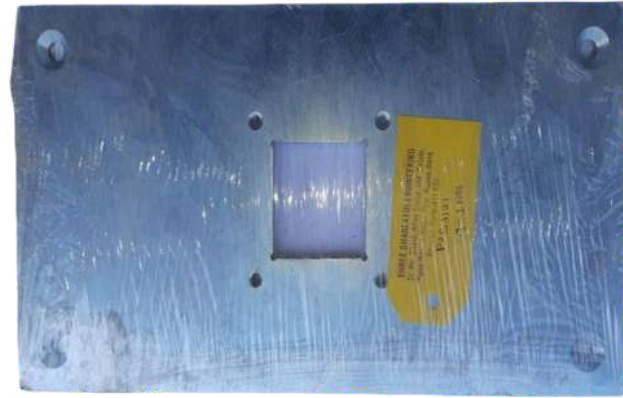


C RAIL ASSY

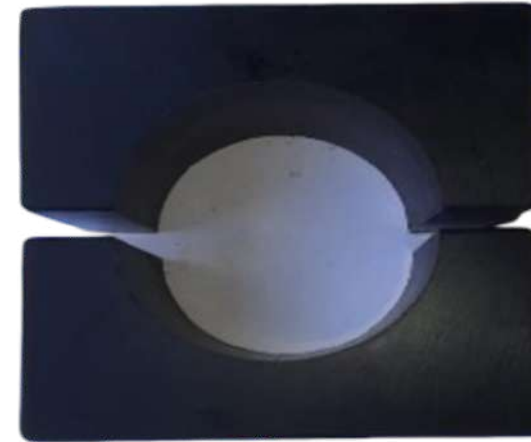
Products We Provide :



SUPPORT BRACKET



CONNECTING PLATE



NYLON HALF BORE



BKT PLATE



COPPER PLATES



COPPER JOINTS



MS BKT



L PLATE

Products We Provide :



ALU MAN DREL



L BKT PLATE



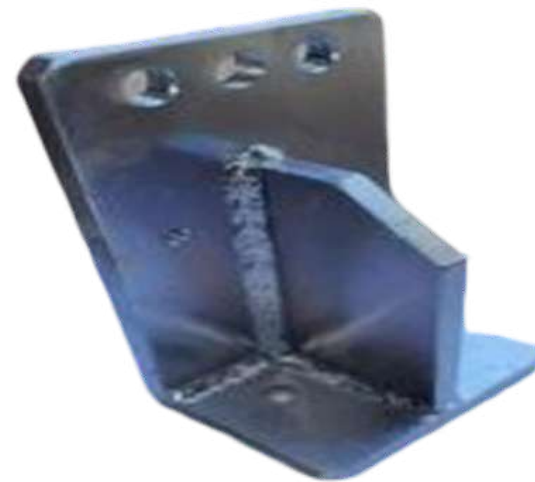
P U COVERED PULLEY



C RAIL ASSY



ALU MAN DREL



JOINT L BKT



CONNECTING PIECE

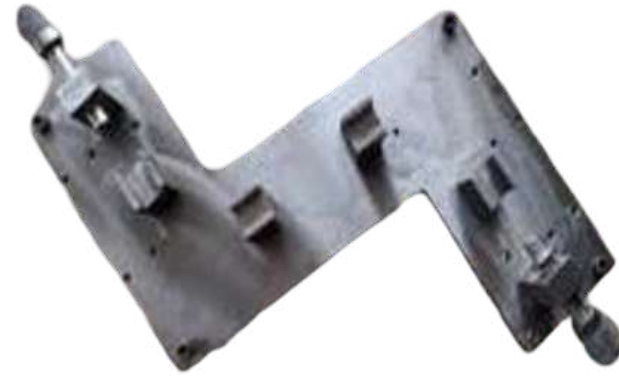


PIPING FIXTURE

Products We Provide :



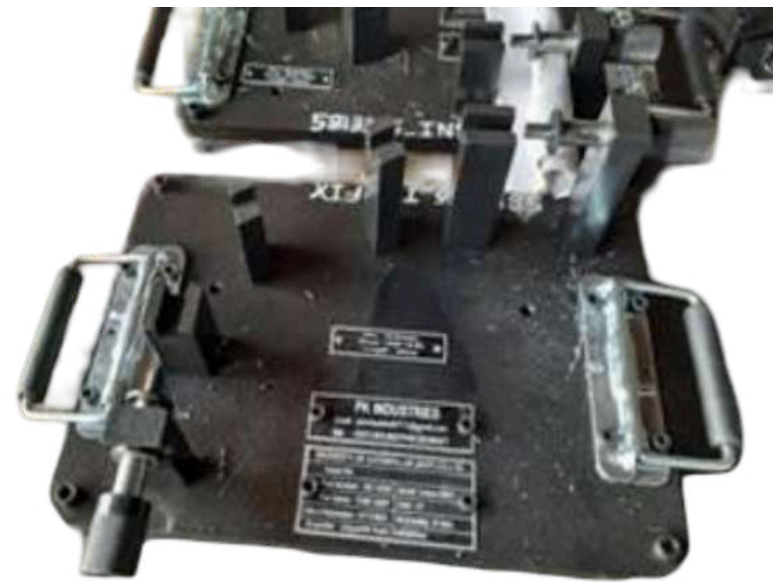
JOINT ARM



PIPING FIXTURE



ACTUATURE ASSEMBLY



PIPING FIXTURE



PIPE HOLDING FIXTURE

Products We Provide :



STRUCTURE BODY SS



FERRULE SS 316



BRASS CONNECTING ARM



CONVEYOUR ROLLER ASSEMBLY

Products We Provide :



MOLD CAVITY



BLOWER



EDGE PLATE



EYE BOLT BKT



GUIDE ROLLER AND BEARING



ARM FOR ROLL FORMING



STEAM TANK

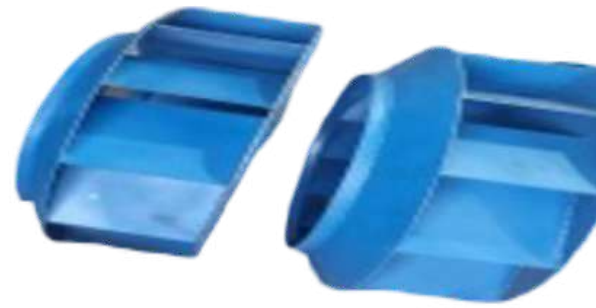


BRASS PART

Products We Provide :



ALU PULLEY



BLOWER



MOLD CAVITY



VAULCANIZER DOOR REPAIR



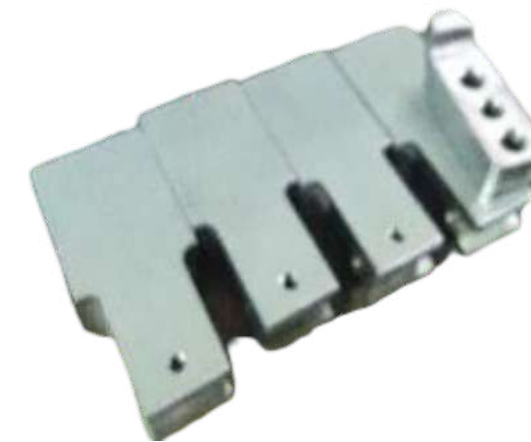
COPPER SLEEVE ARM



ALU COUPLING



MS PART

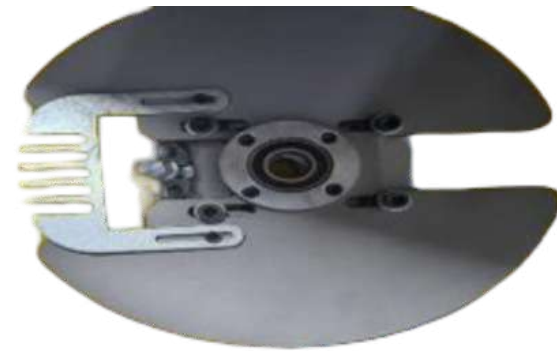


CASTING PRODUCT

Products We Provide :



PRESS PART



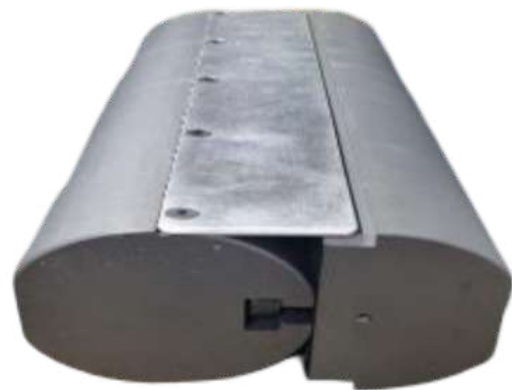
MANDRILL



MOLD CAVITY



VMC PART



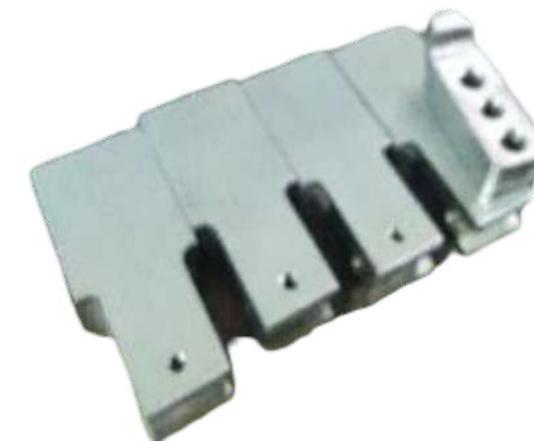
ALU OVEN FIXTURE



COUPLING



MS PARTS



CASTING BKT

Products We Provide :



Bearing Copper Sleeve



Polished Copper Sleeve



Nicopress Copper Sleeve



Hydraulic Shaft



25mm Brass Bush



Gear Hydraulic Shaft



Industrial Tooling



5mm Brass T-Slot



Square Aluminium Cover



Rectangular Brass Sheet

Maintenance Work We Provide :



CALENDER ROLLER REPAIR



MOLD PLATERN ASSEMBLY

Maintenance We Provide :



PLATERN REPAIR



INJECTION DOOR ASSEMBLY

Manufacturing unit we have :



LEATH MACHINE



M2TR



M1TR

Manufacturing unit we have :



LEATH MACHINE



MILLING MACHINE

Manufacturing unit we have :



VMC

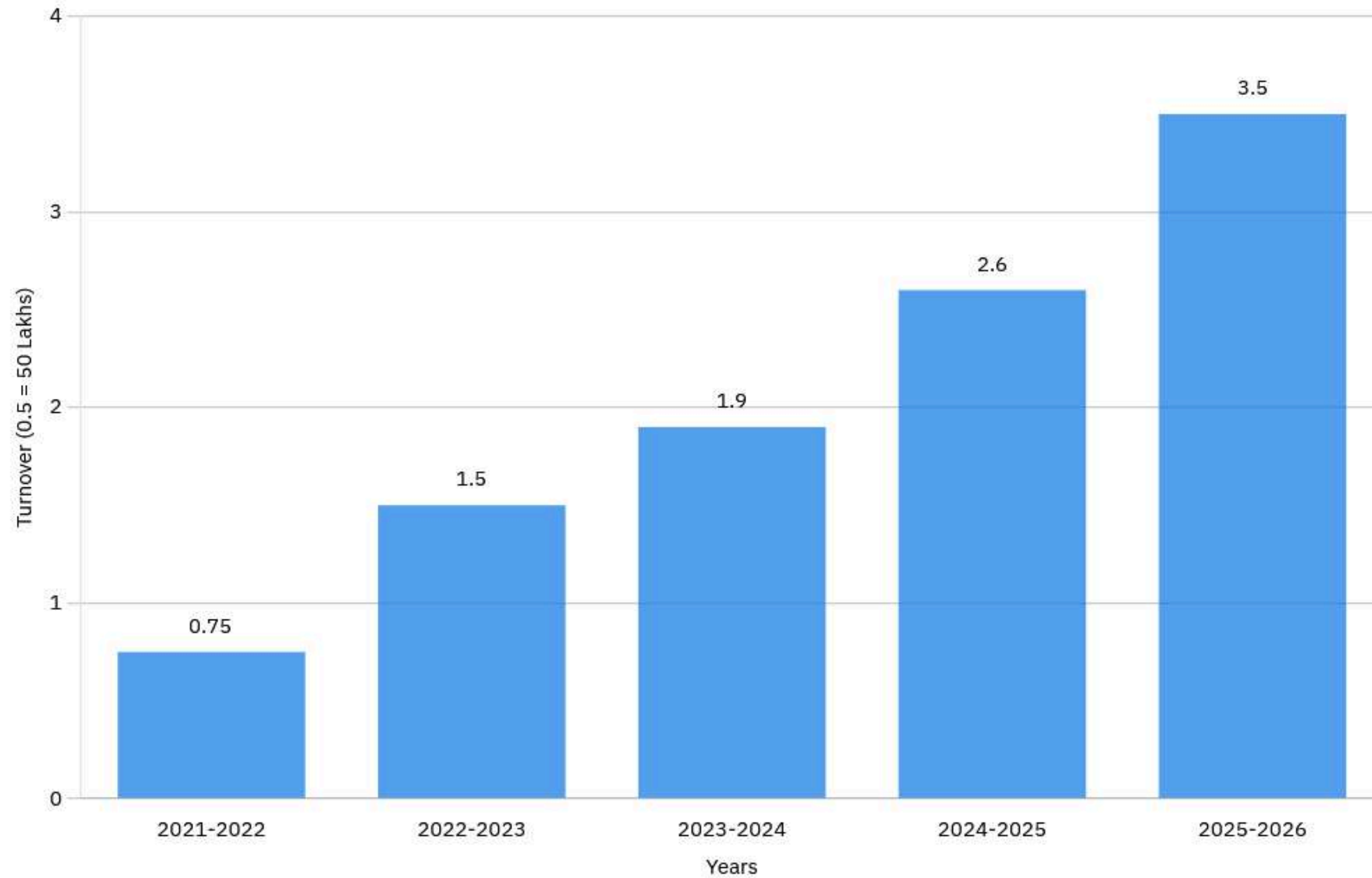


CNC

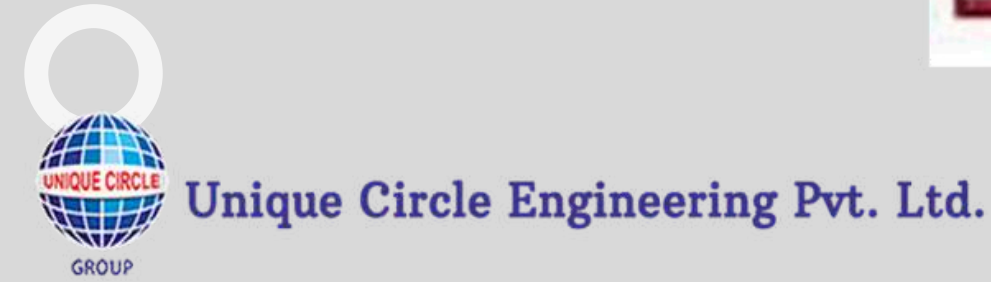
List of machines :

ISO 9001 : 2015		SUBJECT :- LIST OF MACHINE				
		REV.NO.02	REV.DATE:-01.07.2020		FORMAT.NO.:-SDE/PDR/01	
SR.NO.	TYPE OF MACHINE	MACHINE SPEC.(CAPACITY)	NO. OF MACHINE	MAKE	BED SIZE/SHIT HEIGHT	Qty
1	M1TR Machine	3000RPM	SDE/M1TR/01	MANFORD	1250LX350HX400W	1
2	M2TR Machine	3000RPM	SDE/M1TR/02	MANFORD	1250LX400HX350W	1
3	Milling Machine	3000RPM	SDE/MM/03	DUFORE	1500LX810HX700W	3
4	Lathe Machine		SDE/LM/04	SHITAL	5.5FIT	1
5	Lathe Machine		SDE/LM/05	BATALA	14FT	1
6	Lathe Machine		SDE/LM/06	SHITAL	4.0 FIT	1
7	Hacksaw Machine		SDE/HM/07	KISMAT	1.0 HP	1
8	Bench Grinder Machine		SDE/BGM/08	Dig Vijay	3.0 HP	1
9	Weighing Machine		SDE/WM/09	Viswakala	100 KG	1
10	Surface Grinding Machine	12 INCH	SDE/SGM/-10	Prayosha	2008	1
11	Radial Drilling Machine	1.0INCH	SDE/DM/11	G.P.Tools	2.0 HP	1
12	Hyedrollic Trolly	1000 kg	SDE/HT/12	SHALIMAR		1
13	Dewatt Hand Grinder Machine	220/240V	SDE/HGM/13	Dewatt	220/240V	2
14	CNC Machine	300mm	SDE/PGM/14	AMS	DIA 300X280L	1
15	VMC Machine	1060V	SDE/PGM/15	AMS	1000X600X600	1
Prepared By MR		Department Head :-		Approved By :-		

Our Growth Rate throughout years :



Our Partners :



Certifications :



This is to certify that

SHREE DHANLAXMI ENGINEERING
SR NO, 15/8, GALA NO. 61. RASKAR COMPLEX, GULVE VASTI, BHOSARI, PUNE-411026,
MAHARASHTRA, INDIA.
Has been assessed by RAPL and found to comply with the requirements of

ISO 9001:2015
Quality Management Systems

For the following activities:

DESIGN DEVELOPMENT, MANUFACTURE & SUPPLY OF PROCESS EQUIPMENTS, HEAT TRANSFER EQUIPMENTS,
TOOL ROOM JOBS AND ENGINEERING WORKS.

Certificate Number: E20240712XXX
Date of certification: 22/07/2024
1st Surveillance on or before: 21/07/2025
11nd Surveillance on or before: 21/07/2026
Certification Valid Until: 21/07/2027

SHREE DHANLAXMI ENGINEERING



Director (Certification)
RoyalAssessments Pvt. Ltd.
623A, Tower-B, Thum, Plot No. A-40, Sector-62, Noida 201301, India.
www.royalapl.com, info@royalapl.com
Phone: +911204251329
This Certificate can be verified at www.iafcertsearch.com

Accredited
QMS Certification CAB#119012

This Certificate is an endorsement of certified client's certification status but remains the property of RoyalAssessments Pvt. Ltd.
Certificate must be returned on RAPL's request if certificate is withdrawn. Validity of certificate is subject to successful completion of
surveillance audits. RAPL is accredited by EGAC Egypt. EGAC is member of International Accreditation Forum (IAF) and signatory of MLA.



M/S:-SHREE DHANLAXMI ENGINEERING	
ISO 9001:2015	QUALITY POLICY
Format No. SDE/PDR/11/01	Rev No : 00
Rev Date: 15-07-2020	

आम्ही M/S. SHREE DHANLAXMI ENGINEERING चे सर्व सभासद ग्राहकांच्या संपुर्ण समाधासाठी प्रयत्नशील आहोत. त्याकरिता आय.एस.ओ. ९००१:२०१५ गुणवत्ता पध्दतीचा अवलंब करून, गुणवत्ता उद्दिष्टे साध्य करून, प्रतिबंधात्मक उपायाद्वारे व नासाडी कमी कण्यावर भर देऊन आमच्या कार्यक्षमतेत सतत सुधारणा करणे यासाठी आम्ही वचनबद्ध आहोत.

- ▶ ह्या ध्येयपूर्तीसाठी कंपनीतील प्रत्येकजण बांधील राहू
- ▶ सार्वच्या जबाबदारी व अधिकार स्पष्ट करून.
- ▶ कर्मचाऱ्यांच्या गुणाचे व मटेरियलचे योग्य व्यवस्थापन करून.
- ▶ प्रशिक्षण देऊन कर्मचार्यांच्या गुणवत्तेत वाढ करू.
- ▶ संघटीत कार्याला प्राधान्य देवू.
- ▶ सतत सुधारणा करू.

Prepared By :-Mr.Bhagyesk Deshmukh Approved By :-Mr.Ajabrao Deshmukh